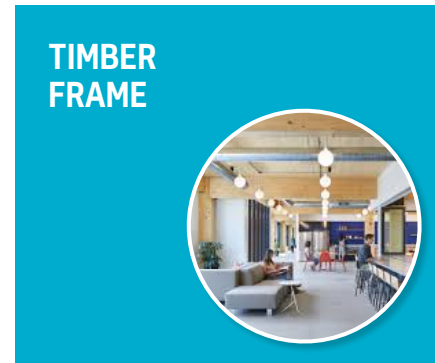
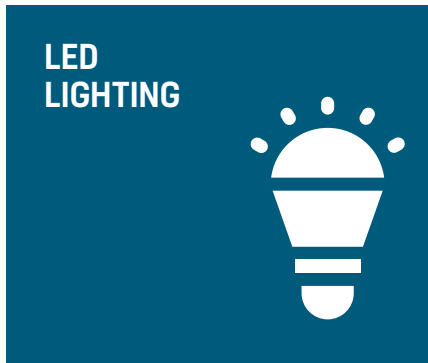
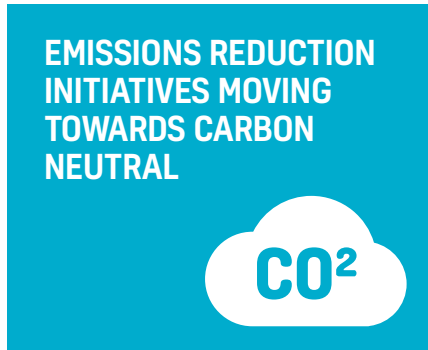
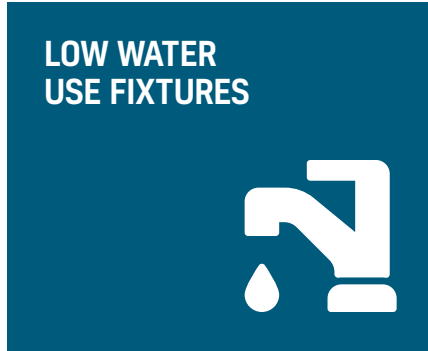
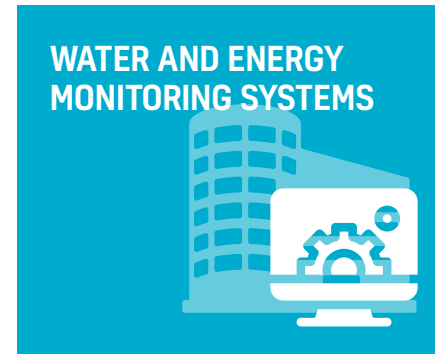
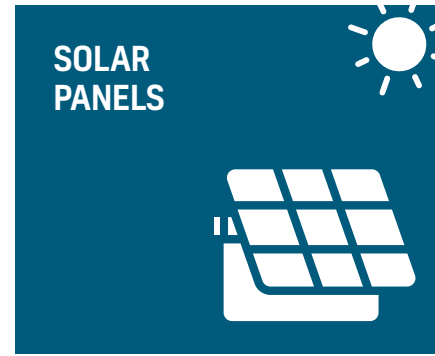
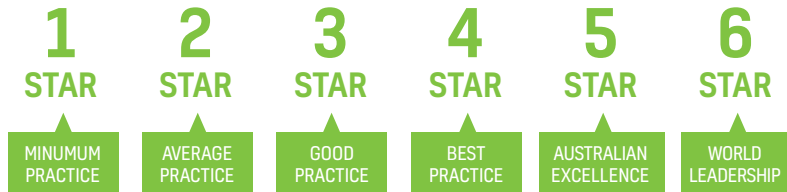


# SUSTAINABILITY OPPORTUNITIES

The Bendigo GovHub is being designed with key sustainability principles in mind, and is aiming to exceed Australian standards in several key areas.

The design will be targeting a Five Star certification through the internationally recognised Green Star rating system, which assesses the design, construction and fit out of buildings, and rewards innovation in sustainable building practices.

The GovHub's design will also strive to achieve a Four Star rating in the National Australian Built Environment Rating System (NABERS) which measures the environmental performance of Australian buildings, tenancies and homes.



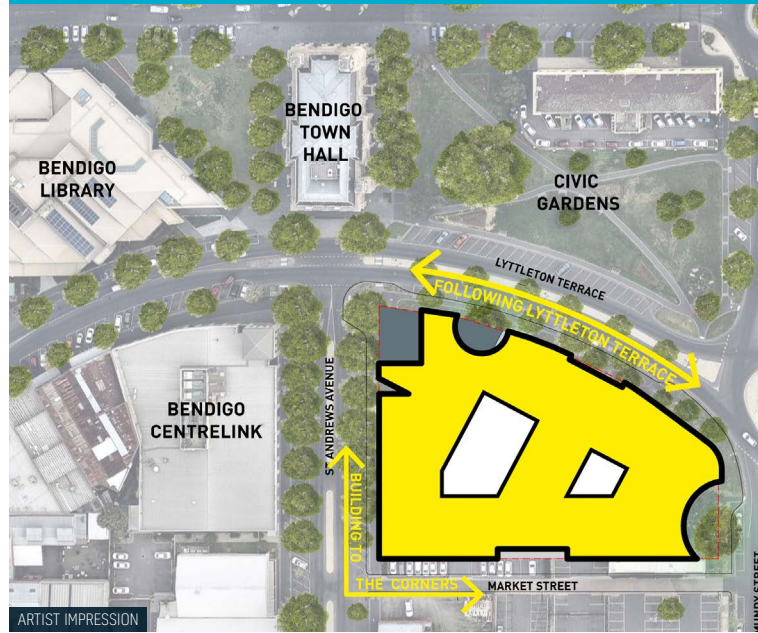
# DESIGN PRINCIPLES

The design principles for the Bendigo GovHub include a strong focus on shape, celebrating the curve of Lyttleton Terrace, while an expanded public forecourt creates an interface between the GovHub and its surrounds.

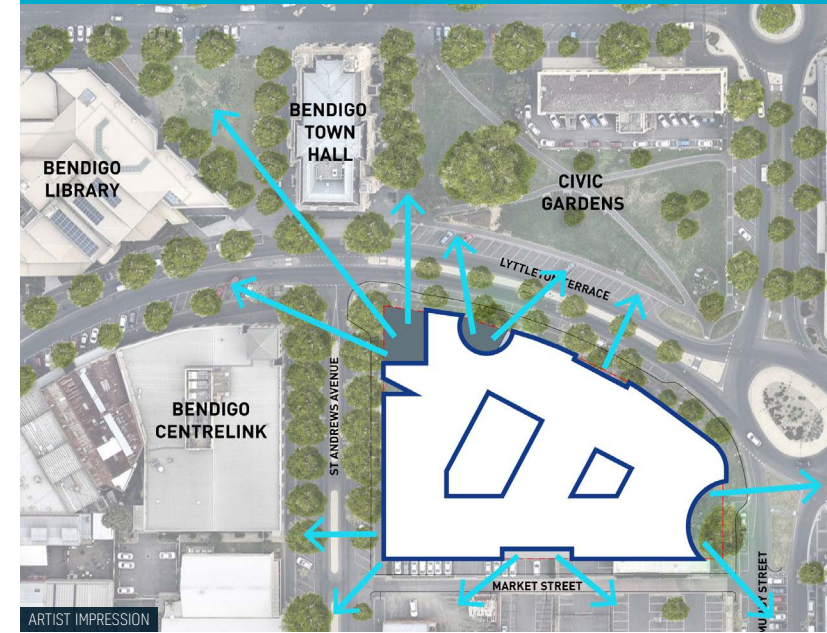
Several strategic cut-outs throughout the building will be designed to create space for daylight and views, bringing landscapes into the building and creating a dialogue with other urban elements.

These cut-outs also offer a visual and formal connection to civic buildings and spaces, with views looking out over the Bendigo Town Hall, Civic Gardens and Bendigo Library.

Following Bendigo's streets



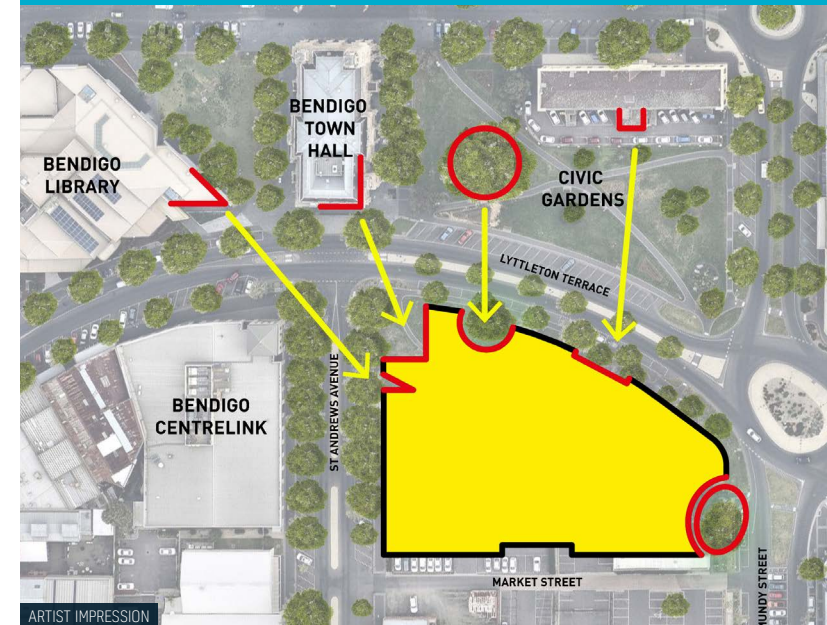
Enjoying views of Bendigo



Courtyards at the heart of the GovHub



Connecting with local context



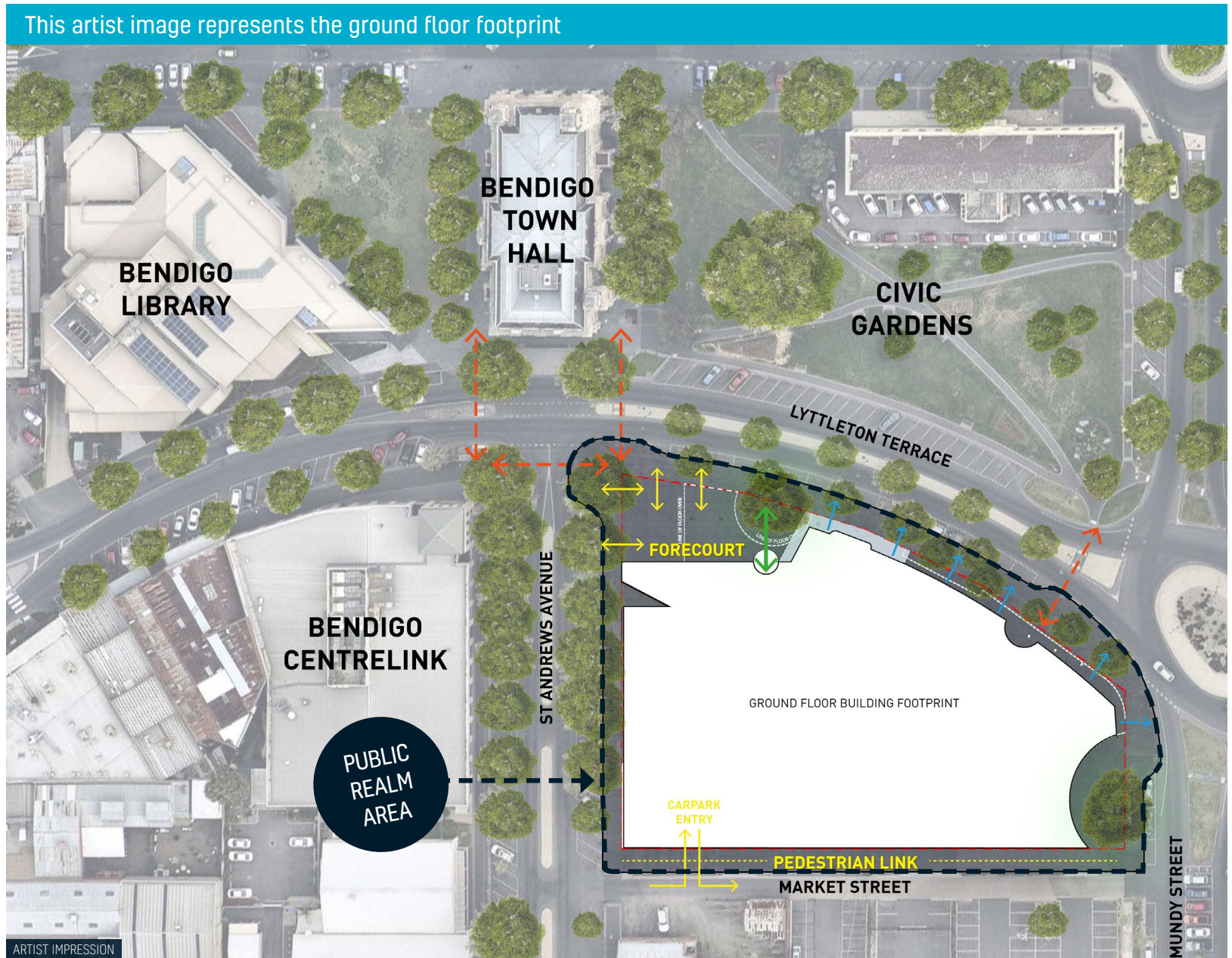


# PUBLIC REALM

The Bendigo GovHub's public realm will feature outdoor spaces for use by the community, and GovHub employees alike.

The outdoor spaces within the GovHub will include a prominent central courtyard which functions as a lightwell, while also featuring a landscaped garden with the potential of park benches for users of the space.

This courtyard is one of several landscaped garden areas which comprise the GovHub's public realm, offering picturesque views from inside the GovHub, and usable outdoor space beyond the building.



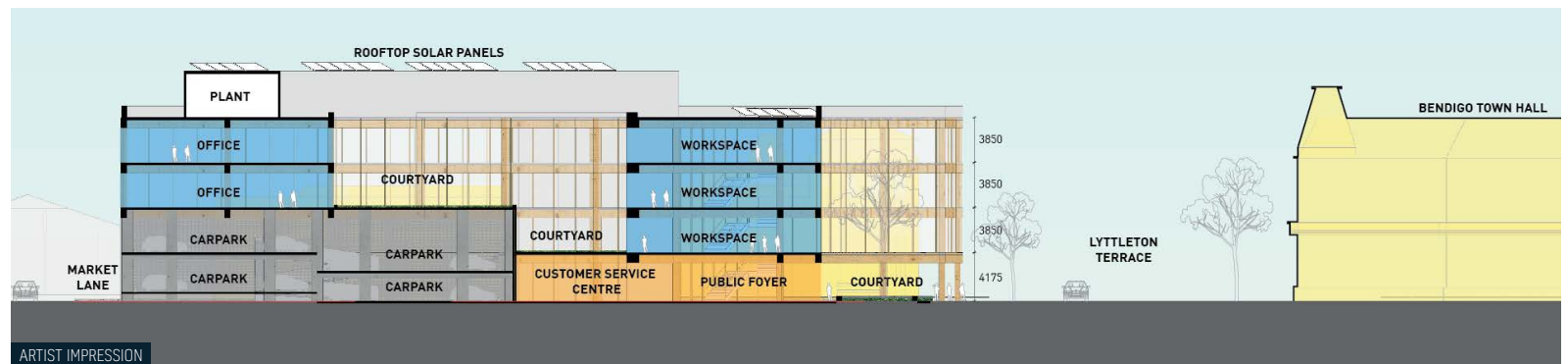
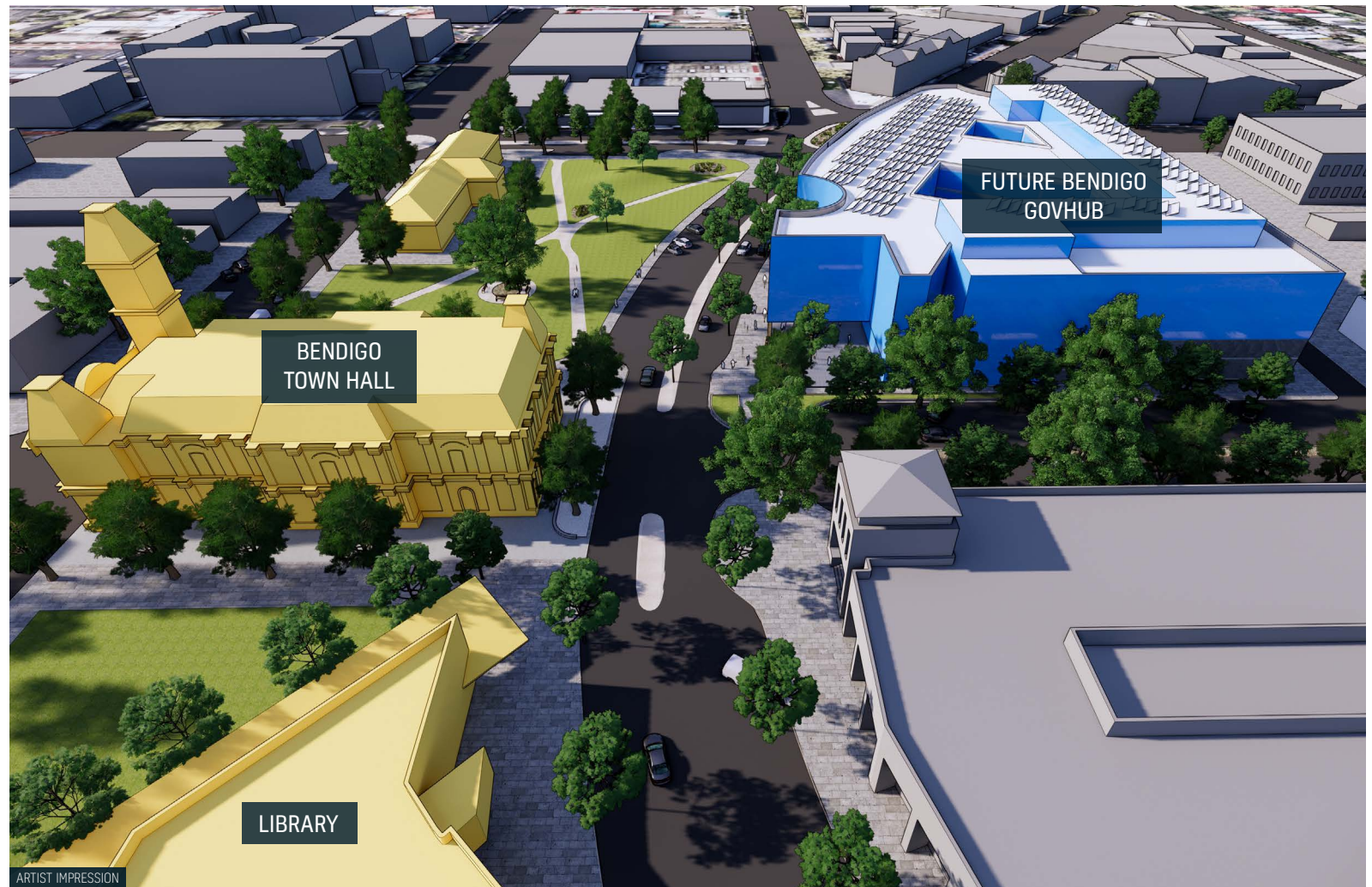


# LOCAL CONTEXT

The Bendigo GovHub's design will be an important part of the Bendigo city-scape, and will feature design principles which are sympathetic to its local surrounds.

The building's design will take into account the height of the Bendigo Town Hall, and will not exceed the height of this neighbouring building.

By respecting the curve of Lyttleton Terrace, the GovHub will embrace modern design principles while also fitting seamlessly into the surrounding area. The GovHub will build strong interfaces with other significant local buildings.





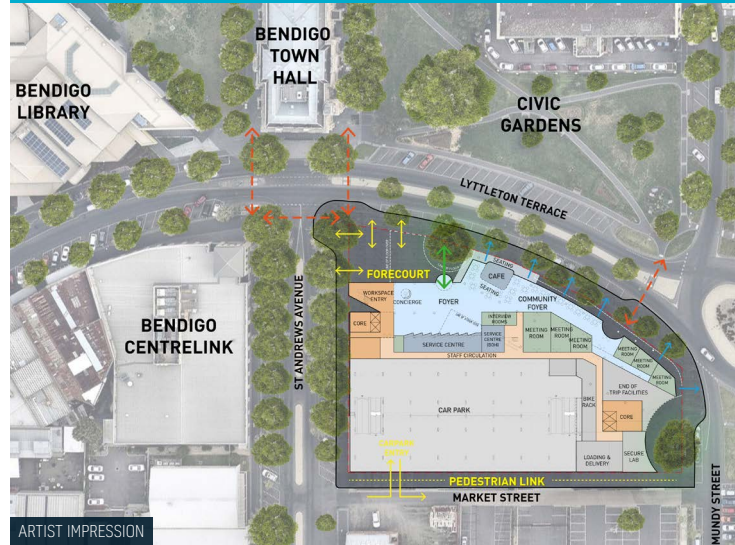
# INSIDE THE GOVHUB

The images feature artist impressions of the Bendigo GovHub's potential ground floor plans, showing a space which will be activated and accessible to both members of the public, and employees working in the GovHub.

The community spaces within this ground floor area could include accessible spaces with "lookouts" offering views of the GovHub's landscaped gardens and significant buildings such as the Bendigo Town Hall.

The ground floor design will centre around a landscaped courtyard which functions as a lightwell, as well as a usable space.

Ground floor footprint example



Level 2 footprint example

