

# Ballarat Major Events Precinct

Community Information Session

25 June 2024

Ballarat Major Events Precinct – Artist Impression Only





**ACKNOWLEDGEMENT OF COUNTRY**

In the spirit of reconciliation, Development Victoria respectfully acknowledges the Traditional Custodians of Country throughout Victoria. We recognise their continuing cultural heritage and connection to land, and pay our respects to their Elders, past and present.

# Agenda

**6:00** Engagement Guidelines

Meet the Project Team

Project Overview

**6:30** Q&A Session

Final Comments

**7:00** Session Concludes



# Engagement guidelines

To ensure our session runs smoothly and is enjoyable for all, we invite you to observe the following engagement guidelines:



Information sharing



Q&A



Recording



Respectful engagement



All voices heard



Further information and feedback

# Meet the Project Team



Andrew Carey  
Senior Project Manager  
Sport and Recreation Victoria



Benjamin Delaney  
Senior Project Director  
Development Victoria



Paul Bucci  
Acting Project Director  
Development Victoria

# Regional Sports Infrastructure Program

The Victorian Government is delivering 15 new and upgraded sports facilities across six key Victorian regions.

Development Victoria is the delivery organisation for a number of these projects.

Local councils will deliver the remaining projects.

## Development Victoria Projects

**Ballarat** – Ballarat Major Events Precinct upgrades.

**Bendigo** – Bendigo Showgrounds and Bendigo Stadium upgrades.

**Geelong** – A new sports facility at Armstrong Creek and upgrades to Stead Park.

**Gippsland** – Upgrades to Gippsland Sports and Entertainment Park, and Morwell Gun Club.



# At Development Victoria, we create places for people.

We're a government agency partnering with industry leaders and local communities to transform ambitious ideas into reality. And together, we deliver places that make a genuine difference to the people of Victoria.



# Our Regional Portfolio

In recent years, we have significantly increased our regional portfolio, delivering projects of state significance, including the Ballarat GovHub, Galkangu – Bendigo GovHub, and the Geelong Arts Centre.

We are in the process of delivering Junction Place Wodonga, the new 12 Apostles Visitor Centre and Nyaal Banyul Geelong Convention and Event Centre.

In coming years, we will be delivering seven sporting infrastructure projects across regional Victoria, providing much needed new and upgraded sporting facilities to support increased sports participation and visitor opportunities across Victoria's regions.

As population numbers across regional Victoria continue to grow, we are also investigating opportunities to deliver more regional housing across the state, in support of the Victorian Government's Housing Statement.



Nyaal Banyul Geelong Convention and Event Centre



# Project Overview

We are looking forward to delivering a range of important upgrades at Eureka Stadium and the wider Ballarat Major Events Precinct as part of the Ballarat Sports Package.

A design team has been engaged and we are continuing to progress the designs for the Precinct.

The upgrades\* will include:

- 5,000 new permanent seats, raising the seated capacity to 10,000.
- New amenities under this new seating stand, and retention of the south-western standing area.
- A new athletics track and pavilion including additional elements such as light towers, landscaping and a storage shed.
- Accessibility improvements throughout the Precinct including landscaping and accessible pathways.
- Public open space, including landscaping and new seating.

The upgrades will boost local jobs and businesses, and will attract more visitors to the Ballarat region for years to come.

Works on this exciting project are set to commence later this year.

\*All upgrades are subject to planning approval and the outcome of a procurement process



Ballarat Major Events Precinct – Artist Impression Only

# The Ballarat Major Events Precinct



**New Eastern Stands**

- Relocated to celebrate key view lines and retain existing infrastructure.
- Universal access and patron comfort.

**Path to Stadium Concourse**

- With standing grass berm in front retained from existing landscape.

**Equitable Access**

- Graded walkways (in place of ramps) through new infrastructure to connect to existing concourse, providing 360° accessible circulation around venue.
- Levels throughout site to have gentle compliant slopes.
- Lift access to new eastern stand.

**Athletics Clubhouse**

- Tiered seating to front of clubhouse.
- Layout to accommodate for Ballarat Regional Athletics Club.

**Athletics Track Infrastructure Shed**

- For equipment/ machinery storage.

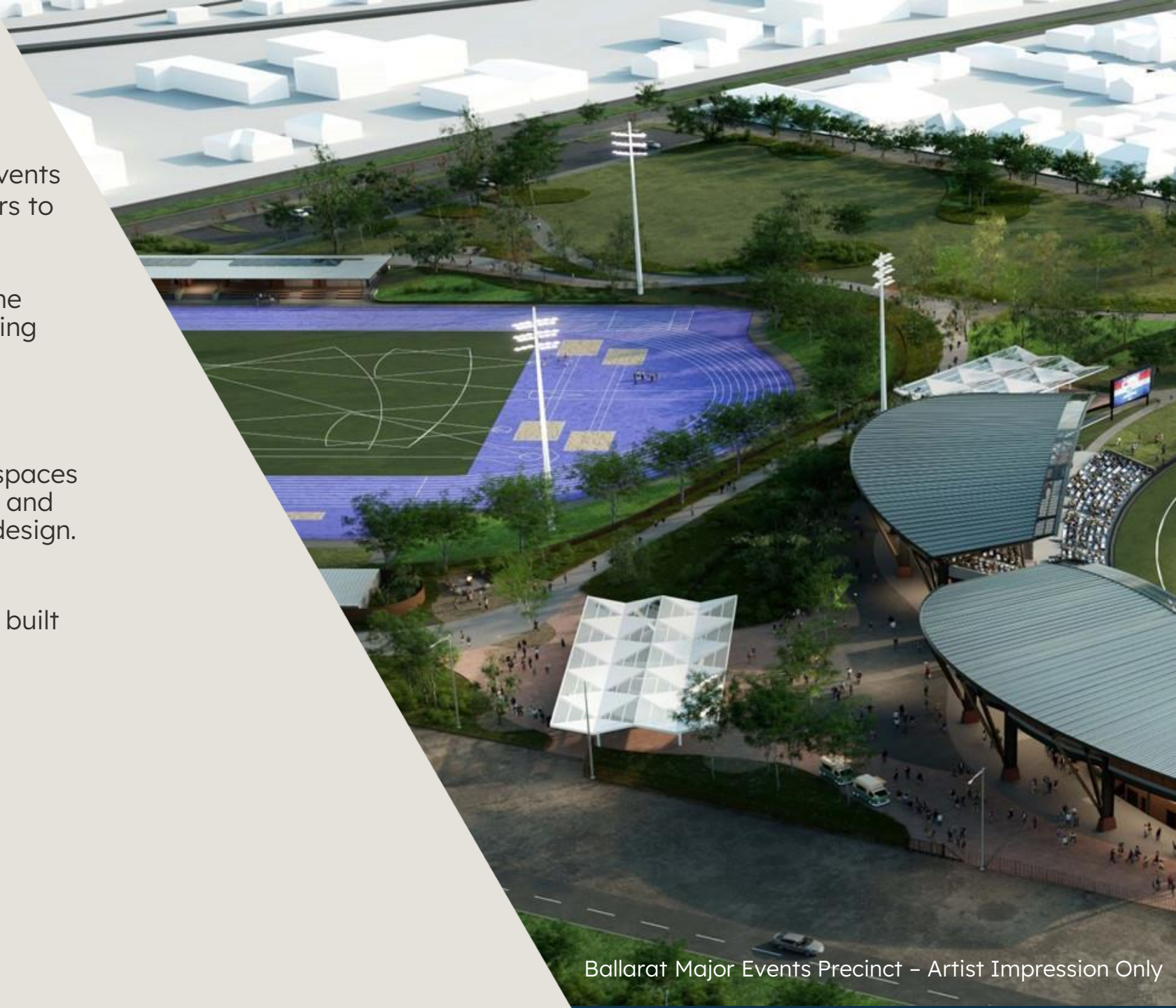
# Our Vision

Our vision is to develop an integrated Major Events Precinct for the Ballarat community and visitors to the Ballarat region.

The design for the venue aims to respond to the local character and context of Ballarat, providing opportunities for sport, recreation and entertainment.

Through an ongoing co-design process with Traditional Owners, we are working to create spaces which showcase Wadawurrung culture, stories and connection to Country through the Precinct's design.

The design will seek to use local materials and plants, and to incorporate elements within the built form which will ensure a lasting legacy for the Ballarat region.



# Project Objectives

- **Delivering economic growth** – Construction of new sporting infrastructure in Ballarat is expected to increase tourism, support economic recovery and build the brand and reputation of Victoria as a global events destination, aligned to the Victorian Government’s priority to grow regional tourism.
- **Further developing and investing in regional Victoria** - Developing regional Victoria is a key theme of Victoria’s Infrastructure Strategy. To attract both tourists and future residents, the regions must offer high quality amenities and sporting, recreational and cultural opportunities.
- **Improved capacity of the region to host major events and attract tourists** through anticipated utilisation of the new infrastructure which provides a viable alternative to metropolitan stadia and generates increased tourism.
- **Increased community, sports and active recreation participation** with new facilities for sporting clubs and local residents to use, increasing levels of physical activity and driving social, economic and health outcomes.



# Impacts for Current Users

- Ballarat Showgrounds to be relocated from existing Showgrounds site to a new site in Mount Rowan.
- Events will continue to be held at Eureka Stadium during construction with reduced capacity.
- Minimal disruption to all Eureka Stadium tenants, with only minor works anticipated within existing infrastructure.
- Field of Play to be uninterrupted during construction.



# Wadawurrung Co-design

Healing Country is at the heart of the design response for this project.

Throughout the design process there has been regular and deep engagement with Wadawurrung Traditional Owners Aboriginal Corporation.

## Workshops with the Wadawurrung included:

- Establishing a Ways of Working charter
- Identifying key design opportunities
- Reviewing possible avenues for expression and co-design
- Exploring ideas for inclusion.

The Ways of Working Charter is underpinned by five key principles including:

- Respect
- Flexibility
- Openness
- Bravery
- Honesty



# Open Space

## New Public South-West Park on former Ballarat Showgrounds site

- The south-west corner of the Ballarat Showgrounds site is set to become a public park, landscaped with vegetation.
- New parkland will be free and open for all community members to visit 24/7.
- The open space will feature new fully accessible public access paths from White Street through to both Creswick and Howitt Streets.



# Sustainability

## Biodiversity & Nature

The existing site only contains a small number of scattered native species which will be retained.

The proposed landscaping selection has been developed supporting the protection and conservation of natural habitats.

This will ensure planting and landscaping use local species.

## Carbon Reduction

Dematerialising the design and prioritising selection of low embodied carbon building materials, with a minimum target of 10% upfront carbon reduction.

## Circular Economy

Achieve high-resource efficiency and re-use, as well as reduced waste in construction for the proposed scope including 90% of waste generated during construction diverted from landfill during construction.

## Capture water run-off into new detention tanks

The project will select low-flow fixtures for new sanitary facilities.

The retention of as much existing infrastructure at the Stadium site as possible is recognised as critical to reducing waste.





# Local Jobs First

We support Victorian businesses and workers by ensuring that small and medium size enterprises are given a full and fair opportunity to compete for both large and small government contracts.

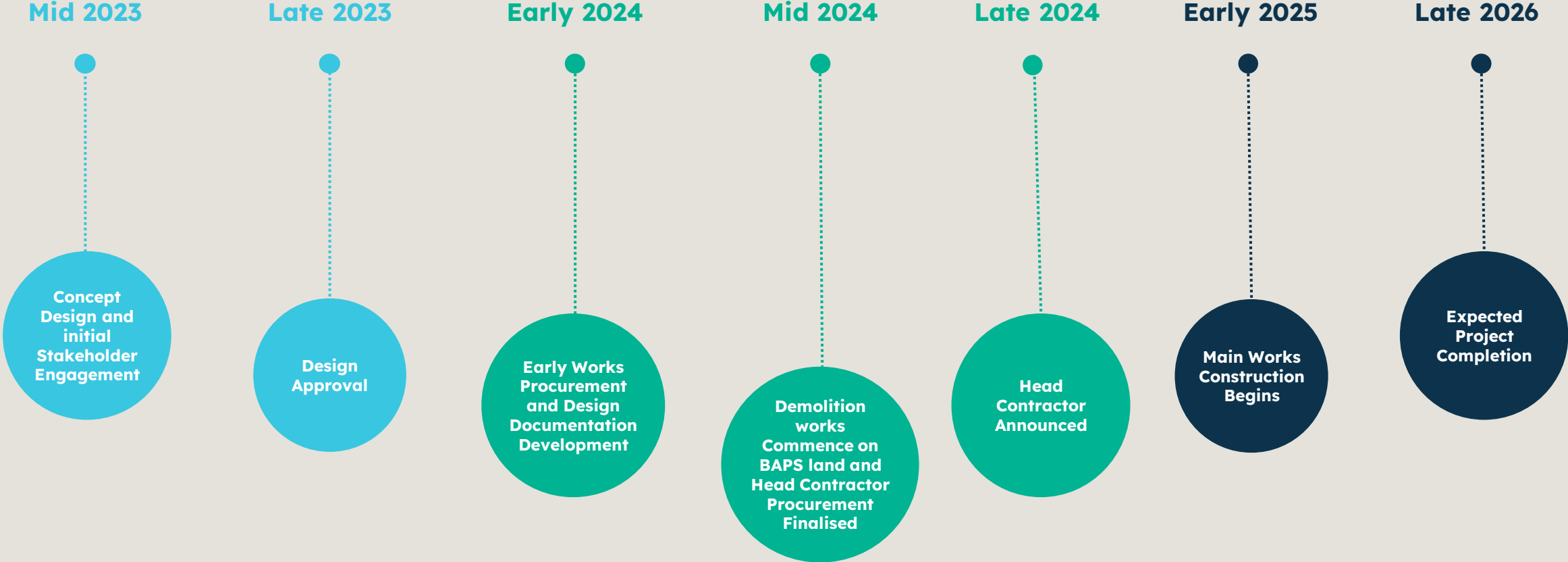
Local Ballarat and Regional Suppliers have been prioritised within the design.

Suppliers can register with ICN for opportunities to supply goods and services to the project.

For more information on how to register visit [Gateway.icn.org.au/projects/11224](https://gateway.icn.org.au/projects/11224) or scan the QR code below.



# Project Timeline



# Q&A

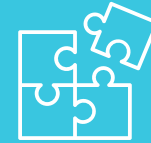
We are ready to answer your questions. Please be reminded of our engagement guidelines:



30 minutes



Share your questions as instructed



Design and Delivery Process



Respectful engagement



All voices heard



More information

# Thank you

Ballarat Major Events Precinct – Artist Impression Only



© 2014 Development Victoria. All rights reserved. Design: [unreadable]