

7<sup>th</sup> February 2024



**RE: MELBOURNE ARTS PRECINCT TRANSFORMATION PROJECT  
- ARTS CENTRE MELBOURNE NORTHERN WORKS CONSTRUCTION**

Dear residents & business owners,

As part of the Melbourne Arts Precinct Transformation, Lendlease has been contracted to undertake staged construction works to the sewer infrastructure in Fanning Street. Below are the stages and traffic conditions that are to be expected for the remainder of the works:

**Stage 1: On Fanning Street between Fawkner Street and City Road**

- Commencing **Monday 10<sup>th</sup> February** with an anticipated completion date of **Friday 14<sup>th</sup> February 2025** (indicative only). Works will take place between 7am-5pm Mon-Fri

What to expect:

- Road closure on Fanning St between Fawkner Street and City Road (Day & Night).
- Carpark access remains for Mantra Hotel and Holiday Inn Express
- Pedestrian access on footpath will be maintained.
- Changes to traffic conditions with traffic management present to direct vehicles & assist access into local driveways.
- Low construction noise

**Stage 2: On Fanning Street between Kavanagh Street and Fawkner Street**

- Commencing **Monday 17<sup>th</sup> February** with an anticipated completion date of **Wednesday 26<sup>th</sup> February 2025** (indicative only). Works will take place between 7am-5pm Mon-Fri

What to expect:

- Road closure on Fanning St between Kavanagh Street and Fawkner Street (Day & Night).
- Pedestrian access on footpath will be maintained.
- Changes to traffic conditions with traffic management present to direct vehicles & assist access into local driveways.
- Low construction noise

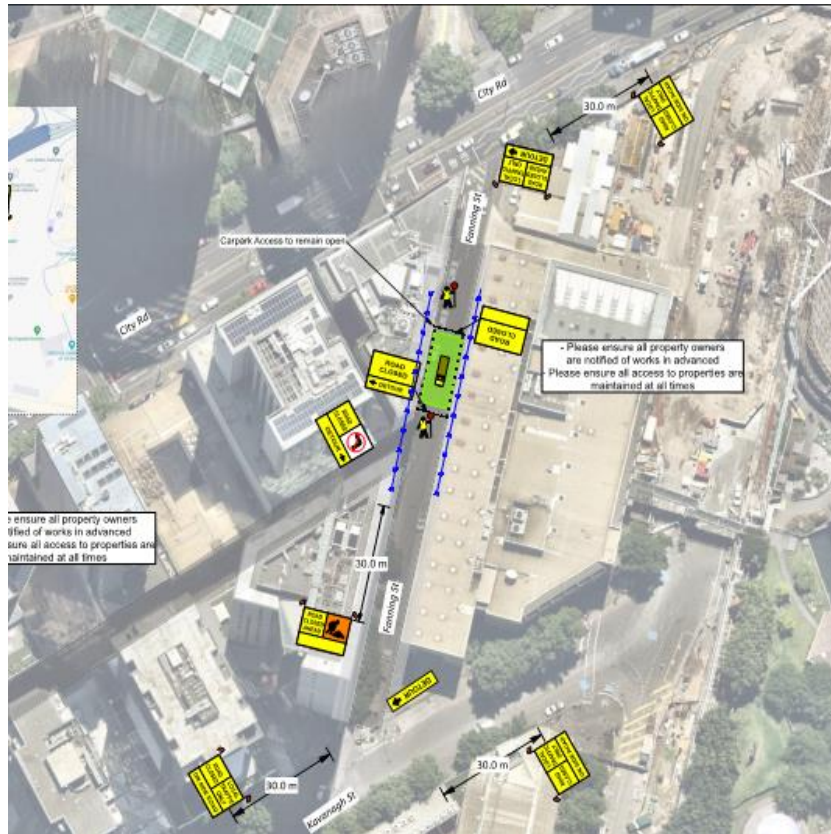
**Stage 3: At the intersection of Fawkner Street and Fanning Street**

- Commencing **Wednesday 26<sup>th</sup> February** with an anticipated completion date of **Wednesday 12<sup>th</sup> March 2025** (indicative only). Works will take place between 7am-5pm Mon-Fri

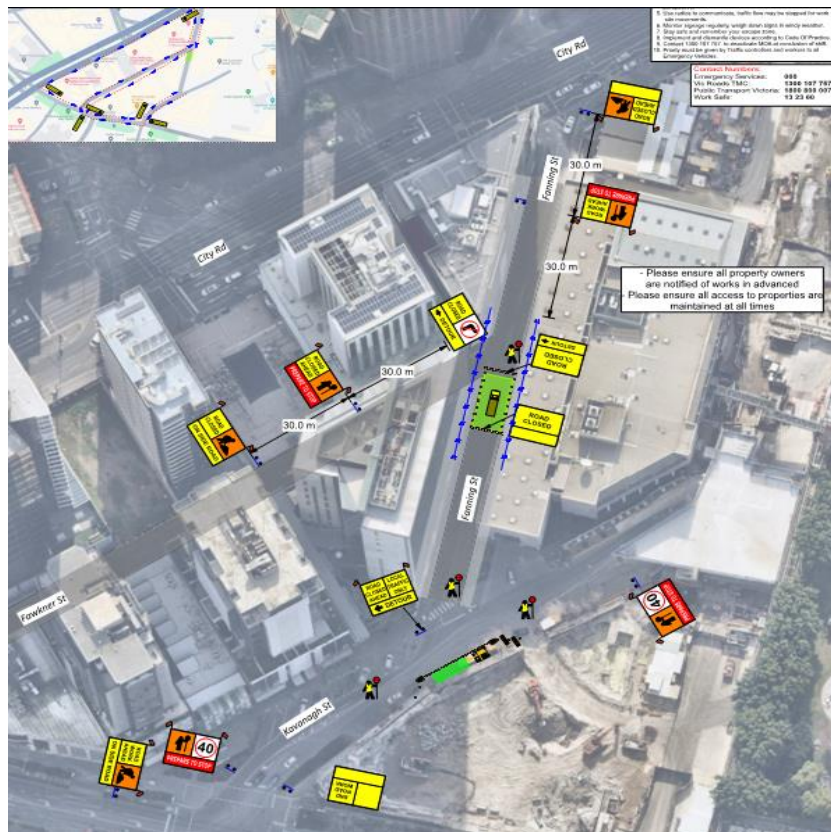
What to expect:

- Road closure at the intersection of Fawkner Street and Fanning Street (Day & Night).
- Carpark access remains for Mantra Hotel and Holiday Inn Express
- Pedestrian access on footpath will be maintained.
- Changes to traffic conditions with traffic management present to direct vehicles & assist access into local driveways.
- Low construction noise

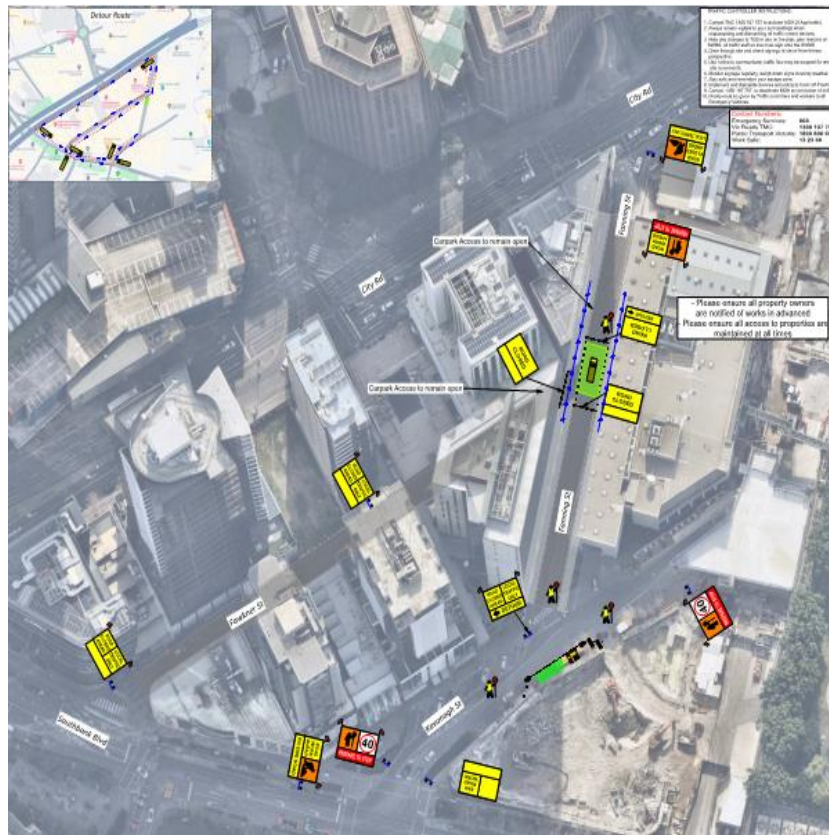
Stage 1:



Stage 2:



**Stage 3:**



To stay up to date on project activities, please visit [development.vic.gov.au/mapt](http://development.vic.gov.au/mapt)

We apologise in advance for any inconvenience this may cause. If you have any queries, please contact the s

Lendlease Project Team via the below details.

Email: [graeme.pollock@lendlease.com](mailto:graeme.pollock@lendlease.com)  
Ph: 0425 733 373

Yours sincerely,

**Graeme Pollock**  
**Construction Manager**  
Lendlease Construction

Lendlease Building Contractors Pty Limited, ACN 56 002 625 130  
One Melbourne Quarter, Level 6, 699 Collins Street Docklands VIC 3008, Australia [www.lendlease.com](http://www.lendlease.com)